

Particular Features:

- Used for the cabinets that require better sealing under vibration conditions
- Lock has 6 mm compression ratio
- Provides widegrip range with adjustable screw
- Lock also provides noise isolation
- Different driver alternatives are available
- 3 different cam alternatives are available

Application:

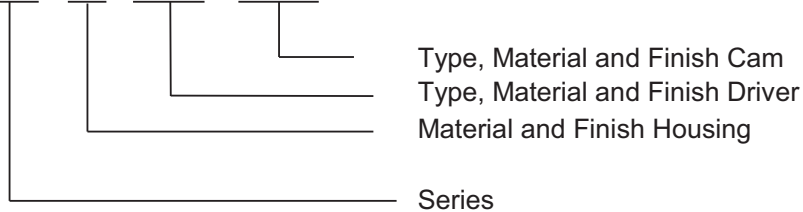
Electric panels, machinery covers, railway applications, construction equipment


Selection Instructions:

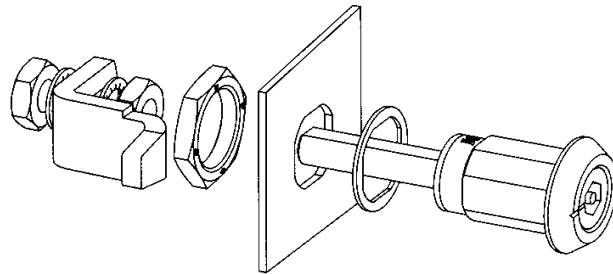
1. Select drive and cam from page 50

Part Number Example

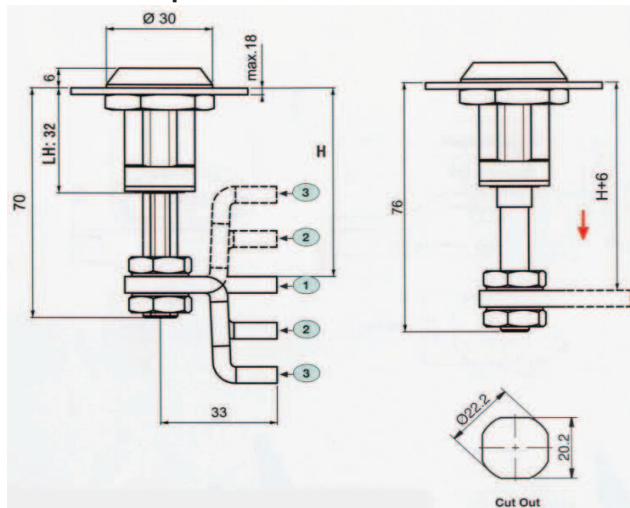
CL20 - ED - 20ED - 197AG



Version	Materials / Finish	Part-No.
	Zamak® DIN-EN1774-ZnAl4Cu1 chrome plated (CrVI-free)	CL20-ED-*
	Zamak® DIN-EN1774-ZnAl4Cu1 black coated (CrVI-free)	CL20-EH-*





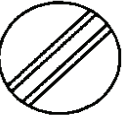
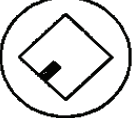






Dimensions and Hole Preparation

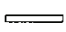




CL and H according to Cam,
see page 47

* drive selected from page 50

Drivers

3mm Double Bit 	5mm Double Bit 	Slot 2X4 	8mm Square 
Material / Finish Part-No. Zamak® Chrome 01ED Zamak® Black 01EH	Material / Finish Part-No. Zamak® Chrome 02ED Zamak® Black 02EH	Material / Finish Part-No. Zamak® Chrome 03ED Zamak® Black 03EH	Material / Finish Part-No. Zamak® Chrome 07ED Zamak® Black 07EH
Railway 	7mm Triangular 	8mm Triangular 	8mm Inner Hexagon 
Material / Finish Part-No. Zamak® Chrome 08ED Zamak® Black 08EH	Material / Finish Part-No. Zamak® Chrome 10ED Zamak® Black 10EH	Material / Finish Part-No. Zamak® Chrome 11ED Zamak® Black 11EH	Material / Finish Part-No. Zamak® Chrome 13ED Zamak® Black 13EH
8mm Hexagon with security pin 	Tubular Key 		
Material / Finish Part-No. Zamak® Chrome 18ED Zamak® Black 18EH	Material / Finish Part-No. Zamak® Chrome 19ED Zamak® Black 19EH		

Cams	H		CH	CL	Materials / Finish	Part-No.
	min	max				
① 	32	58	0	33	Steel / Zinc plated	195AG
② 	24	72	14	33	Steel / Zinc plated	196AG
③ 	10	85	27,5	33	Steel / Zinc plated	197AG