

**Particular Features:**

Used for the cabinets that require better sealing under vibration conditions

Lock has 6 mm compression ratio

Provides widegrip range with adjustable screw

Lock also provides noise isolation

Different driver alternatives are available

3 different cam alternatives are available

**Application:**

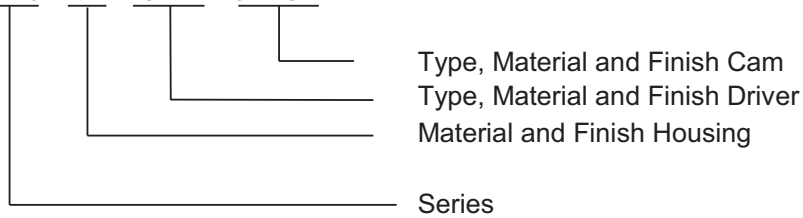
Electric panels, machinery covers, railway applications, construction equipment


**Selection Instructions:**

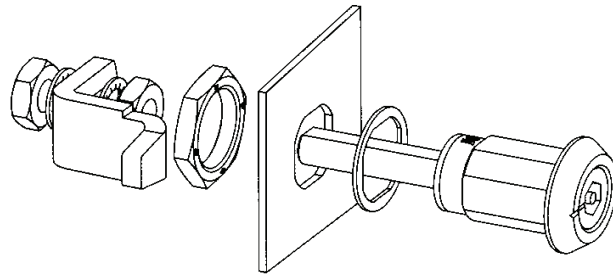
1. Select drive and cam from page 50

**Part Number Example**

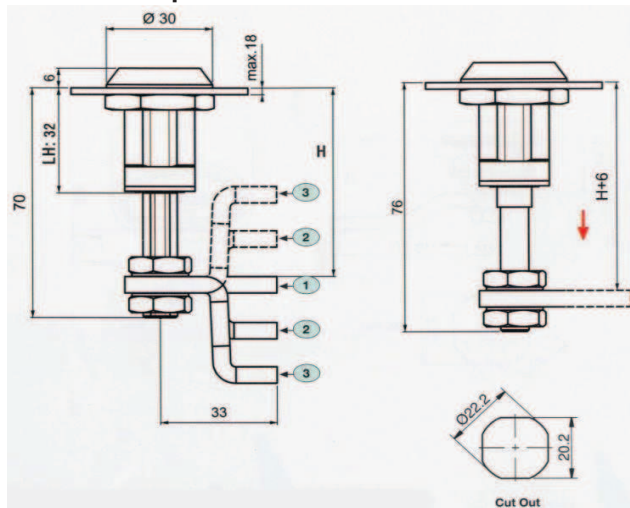
CL20 - ED - 20ED - 197AG



Version	Materials / Finish	Part-No.
	Zamak® DIN-EN1774-ZnAl4Cu1 chrome plated (CrVI-free)	CL20-ED-*
	Zamak® DIN-EN1774-ZnAl4Cu1 black coated (CrVI-free)	CL20-EH-*





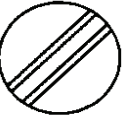
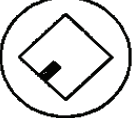






### Dimensions and Hole Preparation

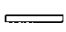




CL and H according to Cam,  
see page 47

\* drive selected from page 50

## Drivers

<b>3mm Double Bit</b> 	<b>5mm Double Bit</b> 	<b>Slot 2X4</b> 	<b>8mm Square</b> 
<b>Material / Finish Part-No.</b> Zamak® Chrome 01ED Zamak® Black 01EH	<b>Material / Finish Part-No.</b> Zamak® Chrome 02ED Zamak® Black 02EH	<b>Material / Finish Part-No.</b> Zamak® Chrome 03ED Zamak® Black 03EH	<b>Material / Finish Part-No.</b> Zamak® Chrome 07ED Zamak® Black 07EH
<b>Railway</b> 	<b>7mm Triangular</b> 	<b>8mm Triangular</b> 	<b>8mm Inner Hexagon</b> 
<b>Material / Finish Part-No.</b> Zamak® Chrome 08ED Zamak® Black 08EH	<b>Material / Finish Part-No.</b> Zamak® Chrome 10ED Zamak® Black 10EH	<b>Material / Finish Part-No.</b> Zamak® Chrome 11ED Zamak® Black 11EH	<b>Material / Finish Part-No.</b> Zamak® Chrome 13ED Zamak® Black 13EH
<b>8mm Hexagon with security pin</b> 	<b>Tubular Key</b> 		
<b>Material / Finish Part-No.</b> Zamak® Chrome 18ED Zamak® Black 18EH	<b>Material / Finish Part-No.</b> Zamak® Chrome 19ED Zamak® Black 19EH		

<b>Cams</b>	<b>H</b>		<b>CH</b>	<b>CL</b>	<b>Materials / Finish</b>	<b>Part-No.</b>
	<b>Grip min</b>	<b>Grip max</b>				
<b>1</b> 	32	58	0	33	Steel / Zinc plated	195AG
<b>2</b> 	24	72	14	33	Steel / Zinc plated	196AG
<b>3</b> 	10	85	27,5	33	Steel / Zinc plated	197AG